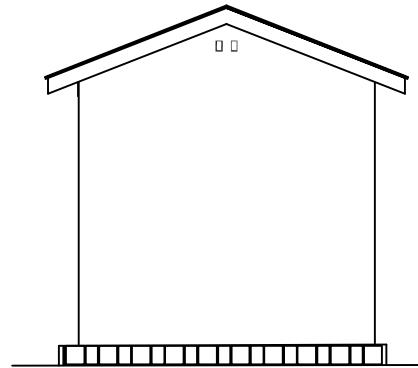
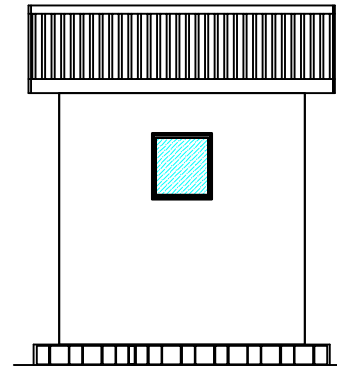


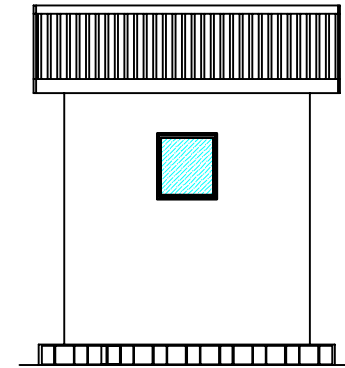
FACADE PRINCIPALE



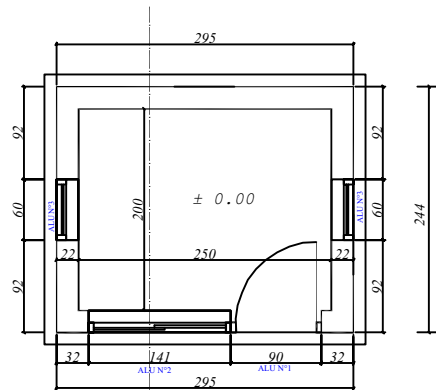
FACADE POSTERIEURE



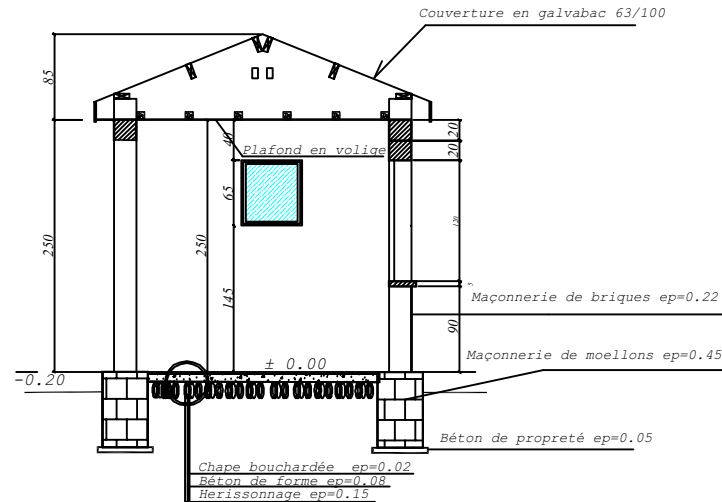
FACADE LATERALE GAUCHE





FACADE LATERALE DROITE



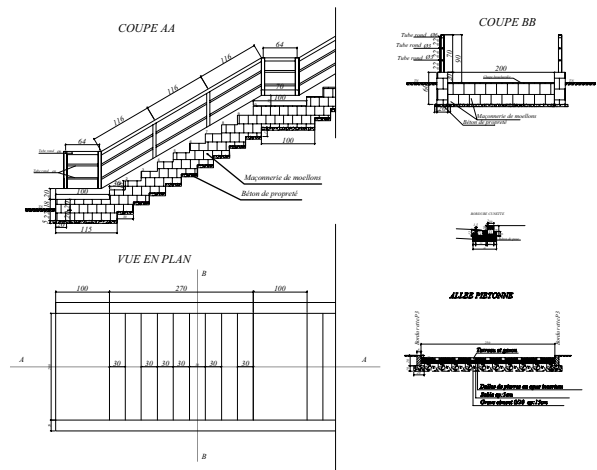
VUE EN PLAN



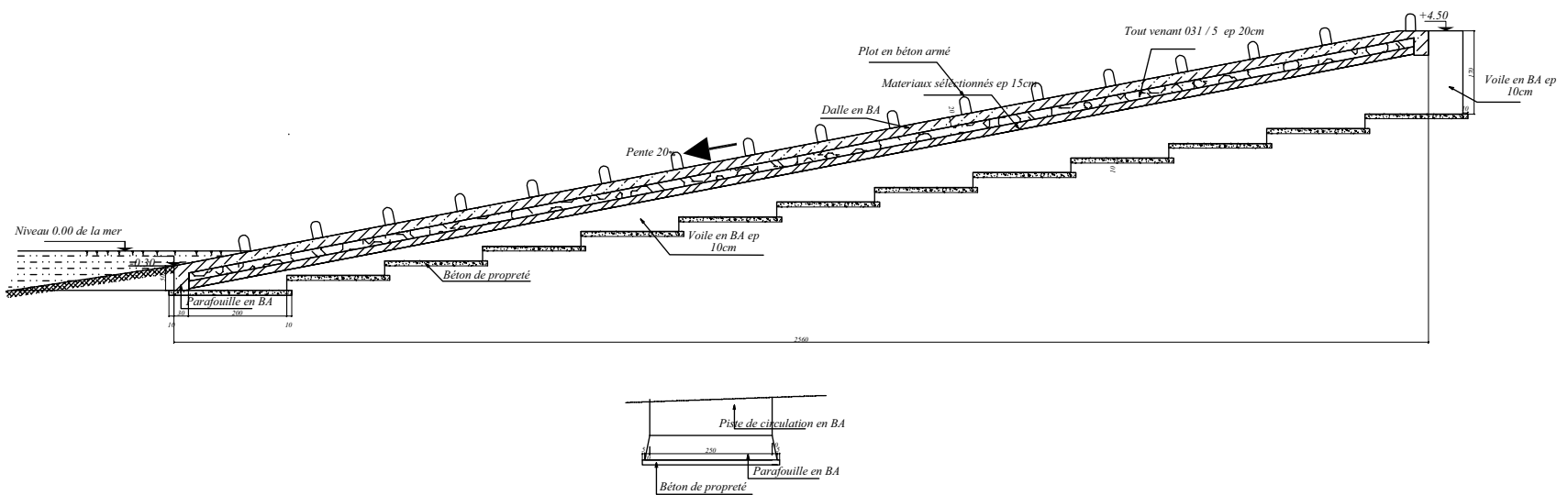
COUPE A - A



PROJET D'AMENAGEMENT "LE CAP DORE"		Article N° 08 JG 02	Indice : 2
		Date : 12-09-06	Ech : 1/75
Dessiné par VICTORIEN	PLAN DES OUVRAGES	 BALOU LIMITED BP 301 Andriana Nony Be. 205	 ESPACE INGENIERIE Lot IIP 109 Avaradoha - Antananarivo 101 Tel: 22 492 88 / 22 401 20
Vérifié par PBU	GUERITE		
Approuvé par PBU	Indice :		

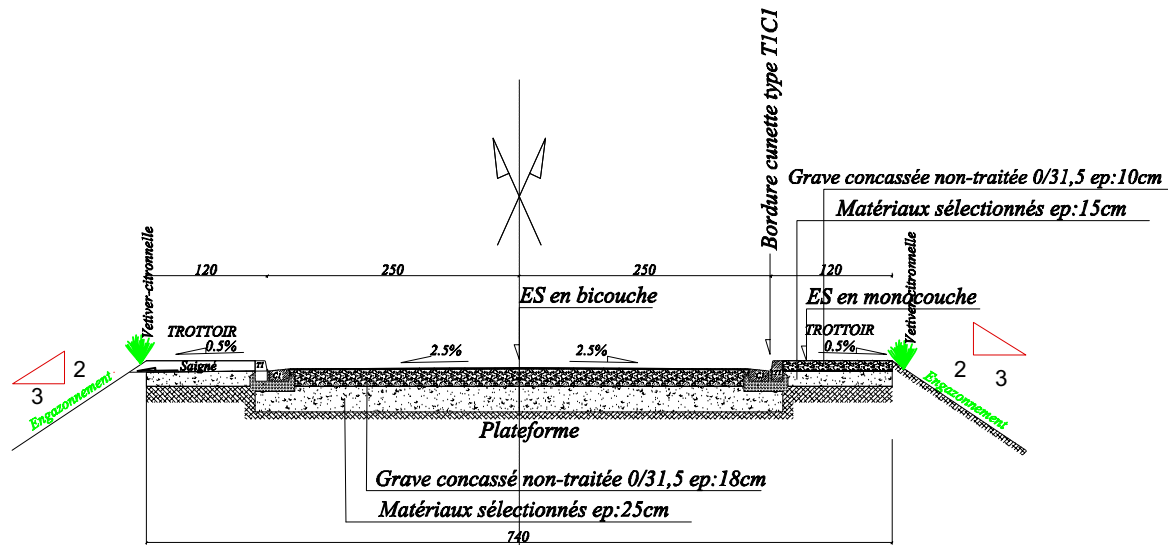
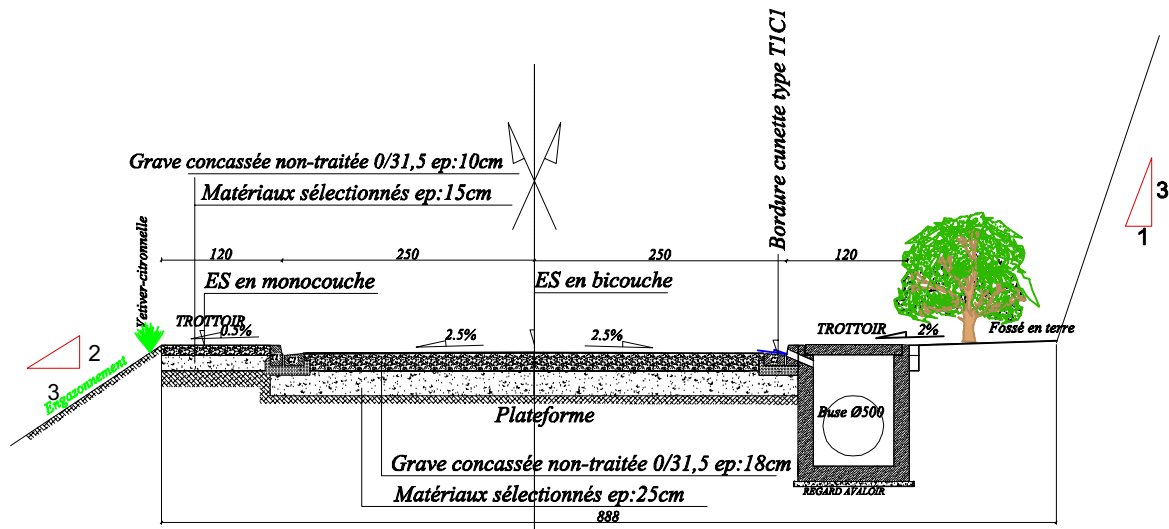
ESCALIER



RAMPE EN BA



PROJET D'AMENAGEMENT "LE CAP DORE"		Article N°	Indice :
		08 JG 02	2
		Date : 12-09-06	Ech : 1/100
Dessiné par	PLAN DES OUVRAGES RAMPE - ESCALIER - ALLEE PIETONNE - BORDURE	 BALOU LIMITED BP 301 Andilana Nosy Be 205	 ESPACE INGENIERIE Lot IIP 109 Avaradoha - Antananarivo 101 Tel: 22 492 88 / 22 401 20
Verifié par			
Approuvé par			
VICTORIEN	Indice :		
PBU			
PBU			

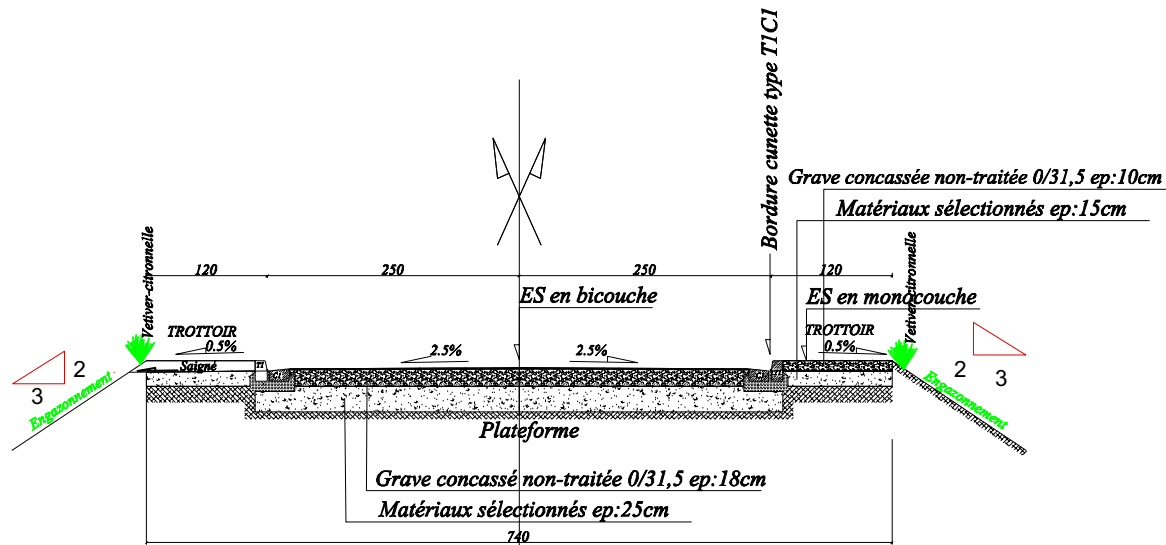
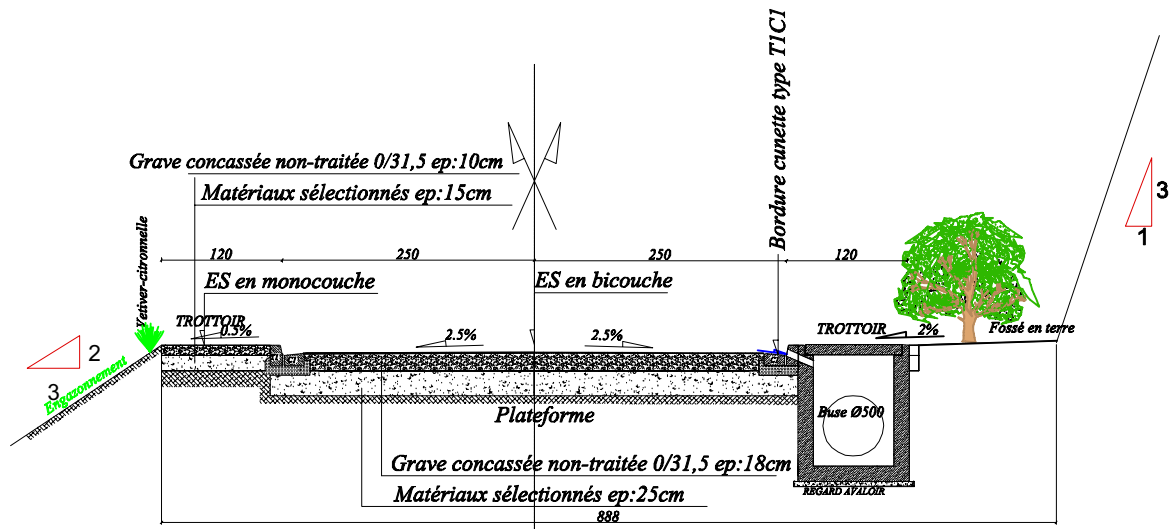


PROJET D'AMENAGEMENT "LE CAP DORE"

Article N°	Indice :
08 JG 02	2
Date : 12-09-06	Ech : 1/150

Dessiné par VICTORIEN	PLAN DES OUVRAGES
Verifié par PBU	COUPE TYPE CHAUSSEE
Approuvé par PBU	Indice :





PROJET D'AMENAGEMENT "LE CAP DORE"

Article N°
08 JG 02
Date : 12-09-06

Indice :
2
Ech : 1/150

Dessiné par
VICTORIEN

Verifié par
PBU

Approuvé par
PBU

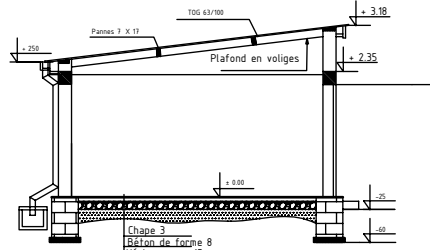
PLAN DES OUVRAGES

COUPE TYPE CHAUSSEE

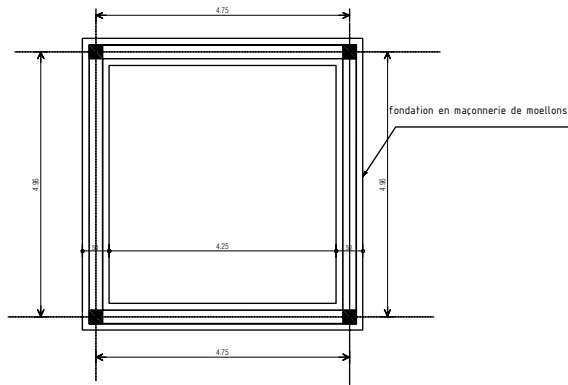
Indice :



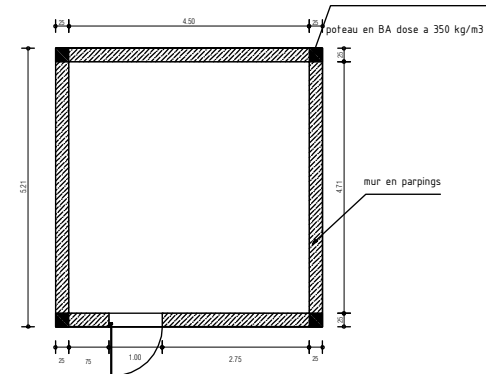
ABRI POMPE



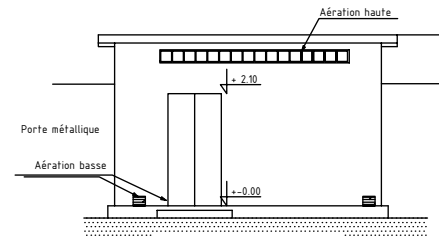
COUPE A-A



PLAN DE FONDATION

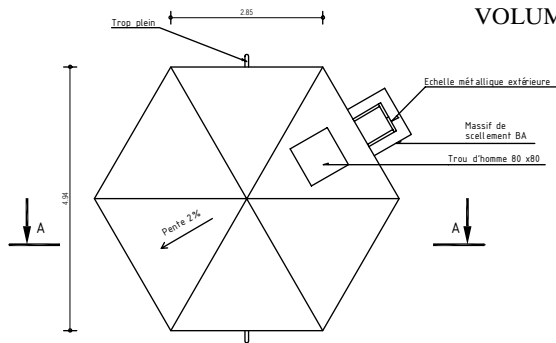


VUE EN PLAN

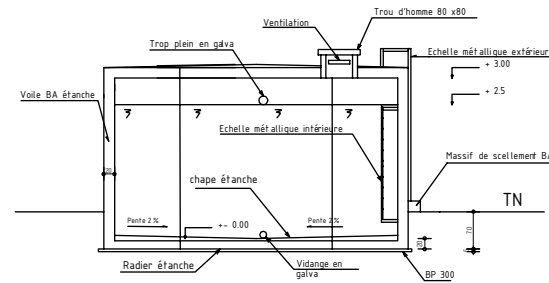


FACADE PRINCIPALE

PLAN DES RESERVOIRS VOLUME = 75 m3



VUE EN PLAN



COUPE A-A

PROJET D'AMENAGEMENT "LE CAP DORE"

Article N° 11 JG.02
Date : 17-03-06

Indice :

Ech : 1/100

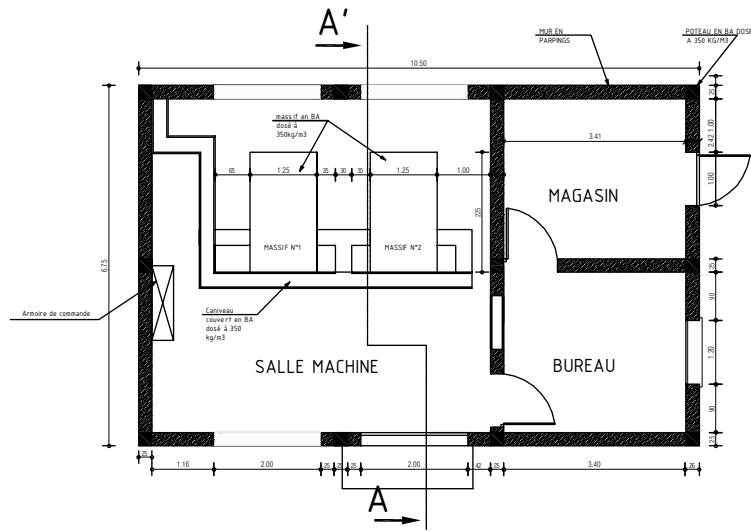
Dessiné par SOLO
Vérifié par ALBERT
Approuvé par PBU

RESERVOIR ET ABRI POMPE

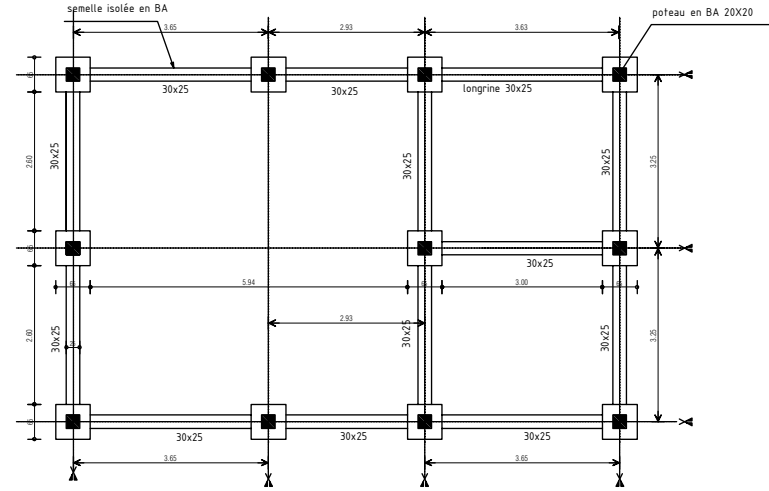
Indice :


BALOU LIMITED
BP 301 Andriana
Nony Be. 205

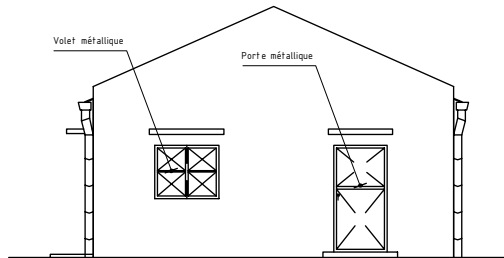

Lot 119 Avaradoha - Antananarivo 101
Tel: 22 492 88 / 22 401 20



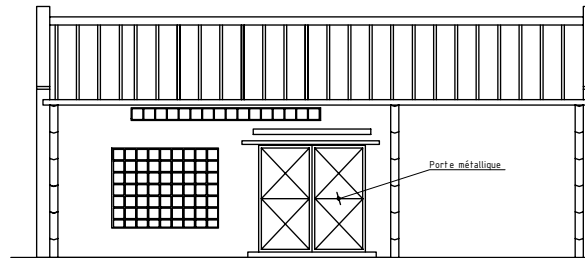
VUE EN PLAN



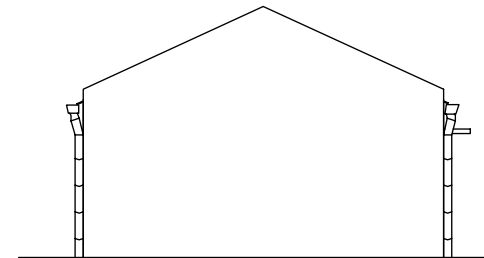
PLAN DE FONDATION



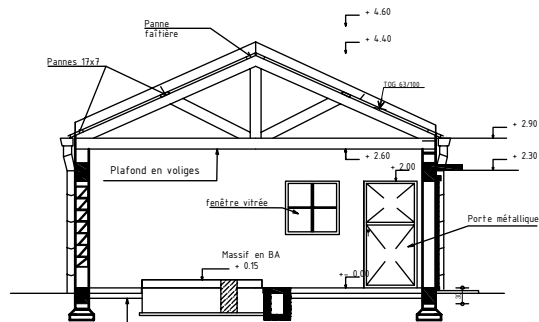
FACADE DROITE



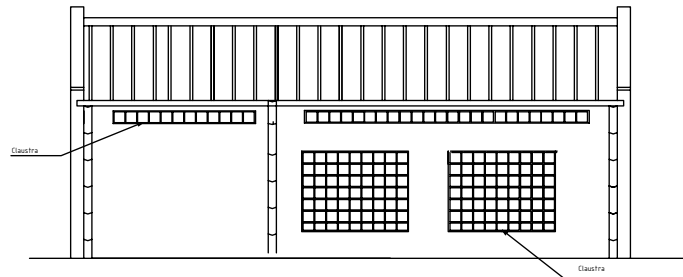
FACADE PRINCIPALE



FACADE GAUCHE





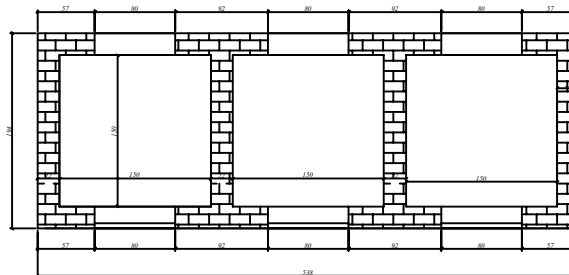
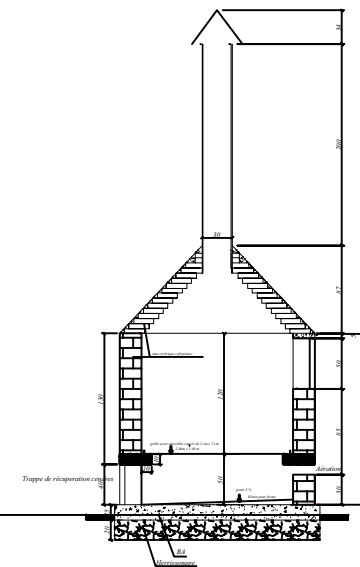
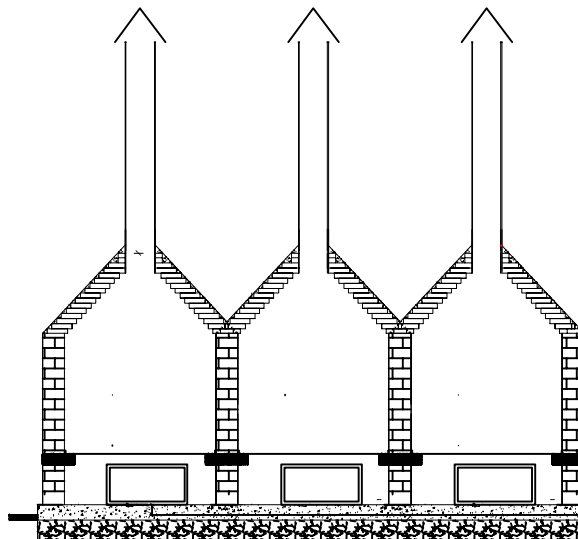
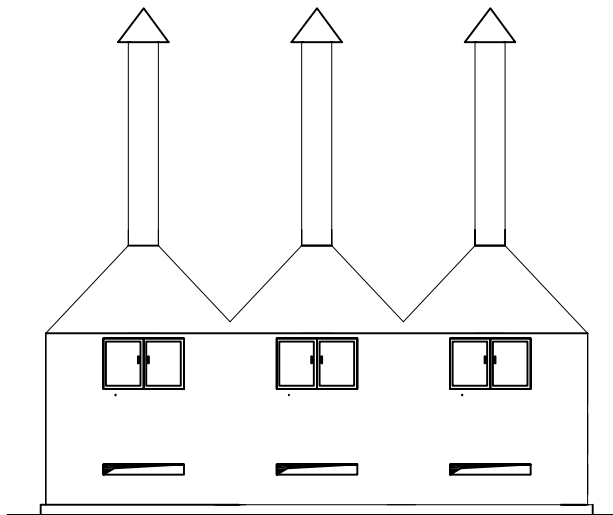
COUPE AA'



FACADE POSTERIEURE

Chape 3
Béton de forme 8
Hérissonnage 15

Dessiné par SOLO Vérifié par ALBERT Approuvé par PBU		Article N° 12 JG 02 Date : 17-03-06 Ech : 1/100	
		Indice :	
PLAN CENTRALE THERMIQUE		 BALOU LIMITED BP 301 Andilana Nosy Be 205	 ESPACE INGENIERIE Lot IIP 109 Avaradoha - Antananarivo 101 Tel: 22 492 88 / 22 401 20
Indice :			



PROJET D'AMENAGEMENT "LE CAP DORE"

Article N°
08 JG 02

Indice :
2

Date : 12-09-06

Ech : 1/75

Dessiné par
VICTORIEN

PLAN DES OUVRAGES

Verifié par
PBU

INCINERATEUR

Approuvé par
PBU

Indice :



BALOU LIMITED
BP 301 Andilana
Nosy Be 205



**ESPACE
INGENIERIE**

Lot IIP 109 Avaradoha - Antananarivo 101
Tel: 22 492 88 / 22 401 20